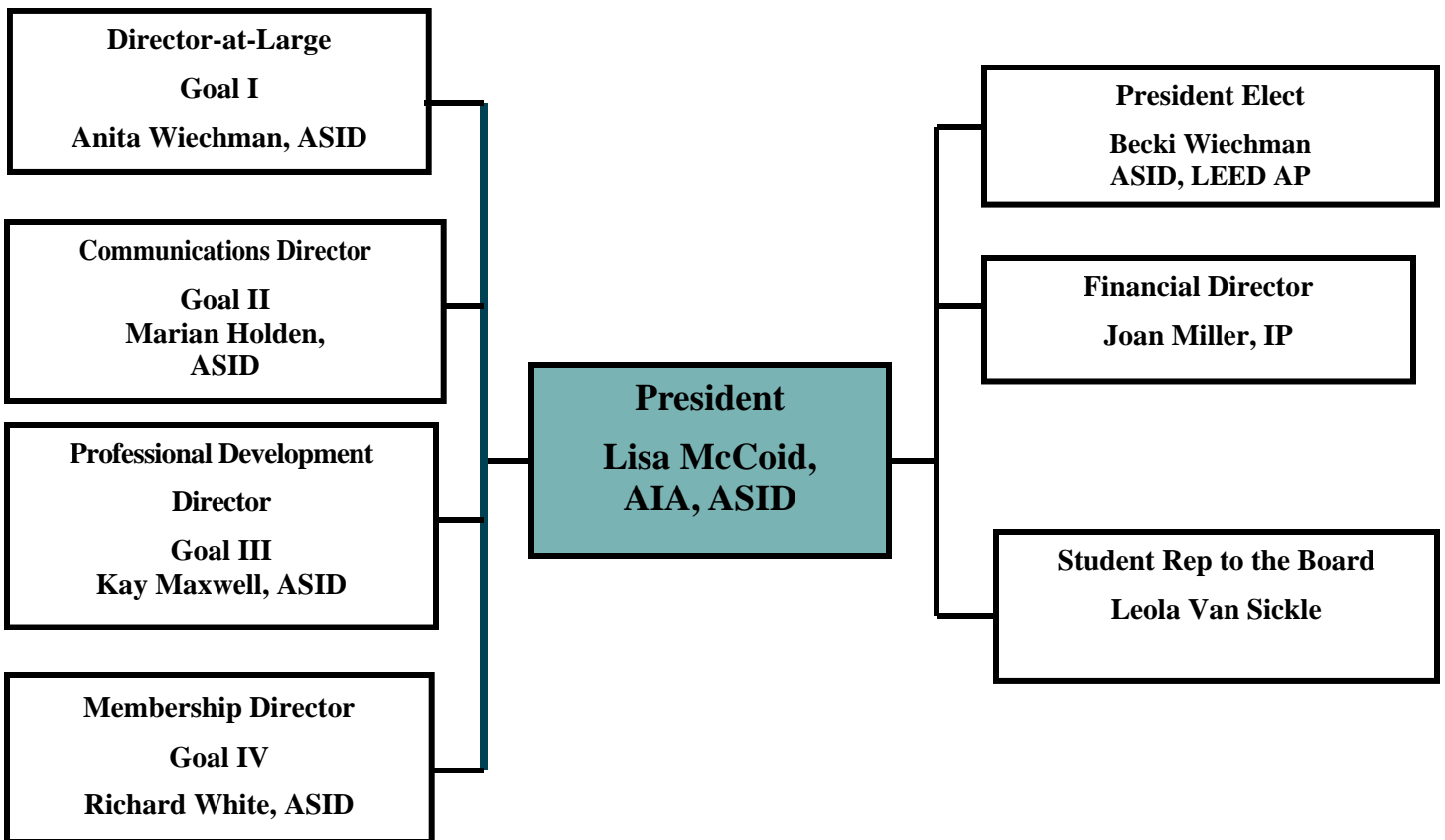


BOARD STRUCTURE 2009-2010



NEBRASKA/IOWA

DIRECTOR-AT-LARGE COMMITTEES

Director-at-Large
Goal I
Anita Wiechman, ASID, CKBR

Tactic # 100

Legislative Efforts

NE—Geri True, ASID
(402) 423-3300

IA—Kathy Flack, ASID
(319) 233-6401

Tactic #125

Bylaws & Policy Chair

Marian Holden, ASID (402) 932-5040

Tactic # 111

IA Retention Chair

Kathy Flack, ASID
(319) 233-6401

Tactic #150

Awards Banquet Co-chairs

Lance Hiatt, ASID
(402) 393-4110 ext. 18
Kris Patton, ASID
(402) 330-0685

Tactic #115

Educate Public

Marian Holden, ASID
(402) 932-5040

Tactic #155

Project Awards Chair

Erin Svoboda, Allied Member ASID
(402) 932-5040
Bethany Banister, Allied Member ASID
(402) 334-8800

Tactic #120

Appellations Chair

Lisa McCoid, AIA, ASID
(402) 502-7309



NEBRASKA/IOWA

COMMUNICATION COMMITTEES

Communications Director

Goal II

Marian Holden, ASID

Tactic #210

Fast Facts Chair

Lisa Giesbrecht, ASID
(402) 484-5008

Tactic #225

Website Chair

Gwen Ahrens, ASID (402)
334-8800
Becki Weichman, ASID (402)
334-8800
Marian Holden, ASID
(402)932-5040

Tactic #275

Community Service Project Co-Chairs

Amanda Chaney, ASID
(402)676-8794
Wyett Tuell, ASID (Pending)
(402)595-1256

Tactic #211

Regulatory Liaison

Anita Wiechman, ASID
(402) 334-8800

Tactic #240

Strategic Planning Chair

Becki Wiechman, ASID (402)
334-8800

Tactic #280

Boy Scouts Explorer Program Chair

Becki Wiechman, ASID
(402)334-8800

Tactic # 215

Archives Chair

Joe Harwood,IP
(402)330-7800
Rick Klaas, ASID
(402)551-9503
Annette Mundy, ASID
(402)659-7006

Tactic # 255

AWARDS CHAIRS

Medallist Award Chair:

Diane Luxford, ASID
(402)496-3233

IP Merit Award Chair:

Joe Harwood,IP
(402)330-7800

Tactic #290

Sponsorship Chair

Joyce Wimmer, ASID
(402)334-8800
Gail Williams, ASID
(402)398-9100
Michael Foley,IP
(402)896-2801

Tactic #220

Membership Directory Chair

Julie Odermatt, ASID
(402)502-7309
Patti Adams, Allied Member ASID
(402)740-2895



NEBRASKA/IOWA

PROFESSIONAL DEVELOPMENT COMMITTEES

Professional Development Director

Goal III

Kay Maxwell, ASID

Tactic #300

National Conference

Lisa McCoid, AIA, ASID
Becki Wiechman, ASID,
LEED AP

Tactic #301

Presidential Forum

Lisa McCoid, AIA, ASID

Tactic #305

Leadership Training

Becki Wiechman, ASID,
LEED AP
(402)334-8800

Tactic #315

Conference Chair

Ellen Turnage, Allied Member
ASID (402) 330-2075
Beth Settles, Allied Member
ASID

(402) 330-0685

EXPO Chair

?
?

CEU Chairs

Ann Newcomer, ASID
(402)421-7171
Sue Sonderegger, ASID

Tactic #306

Board Training

Becki Wiechman, ASID,
LEED AP

Tactic #310

Administrator Training

Annette Harmon

Tactic 325

CEU Research Chair

Ann Newcomer, ASID
(402)421-7171
Sue Sonderegger, ASID
(402)421-7171

Tactic #331

STEP Workshop Chair

NE—Angela Bruno, Allied
Member ASID
(402)502-7309

Tactic #335

**ASID Training Program
Chair**

Becky Rea, ASID
(402)434-5350

Tactic #341

NCIDQ Scholarship Chair

Vicki Pierce, ASID
(402)474-5015

Tactic #345 & #352

Student Affairs Chair

Trisha Otto, Allied Member ASID
(402) 884-1847
**Student Affairs Chair
automatically Chairs

Tactic #354

Student Chapter Liaisons

UNL – Colby Washburn, Allied
Member ASID (402)488-2600
UNO – Trisha Otto, Allied Member
ASID (402) 884-1847
UNK – Beth Keller, Allied Mem-
ber ASID (402)502-7309
Metro CC – Erin Svoboda, Al-
lied Member ASID(402)932-5040
ISU –
Kirkwood – Rebecca Lahart,
Allied Member ASID (319)354-3040
SCC - ?
Wayne State – ?

Tactic #355

Student Career Day Co-Chair

Angela Bruno, Allied Member ASID
(402) 502-7309
Beth Keller, Allied Member ASID
(402) 502-7309

Tactic: 365

3rd Year Scholarship

Carmen Shively, ASID
(402)474-5015



NEBRASKA/IOWA

MEMBERSHIP COMMITTEES

Membership Director

Goal IV

Richard White, ASID

Tactic #405

**Quarterly New Member
Lunch**

Lisa McCoid, AIA, ASID
(402)502-7309
Richard White, ASID
(402)894-9508

Tactic #420

Golf Outing Co-Chairs

Annette Mundy, ASID
(402)659-7006
Joe Harwood, IP
(402) 330-7800

Tactic #445

**Nominating
Committee Chair**

Kim Ferguson, ASID, LEED AP

Tactic #410

Membership Appreciation

Deb Munro, ASID
(402)334-8800
Julie Stanek, ASID
(402)334-8800

Tactic #425

**Team Meetings Omaha
Chair**

**Team Meetings Lincoln
Chair**

Tactic #465

Membership Survey Chair
Becki Wiechman, ASID, LEED
AP

Tactic #412

Target new Iowa IP'ss

Tactic #470

Opportunity Form
Becki Wiechman, ASID, LEED
AP

Tactic #415

IP Wine Tasting Chair

Tactic #430

**Team Meetings IA
Des Moines**

Sherry Brooks
East of Des Moines

Kathy Flack

Sioux City

?

Northeast Iowa

?

Southeast Iowa

?



NEBRASKA/IOWA